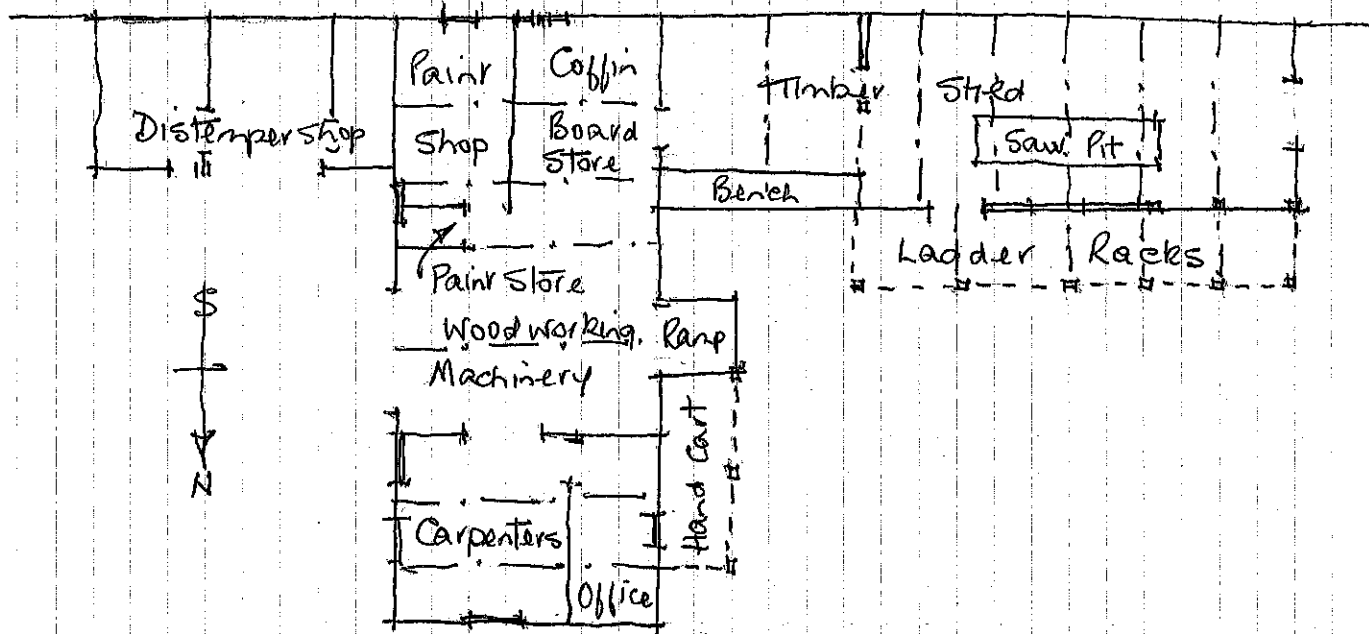


CHURCH LANE

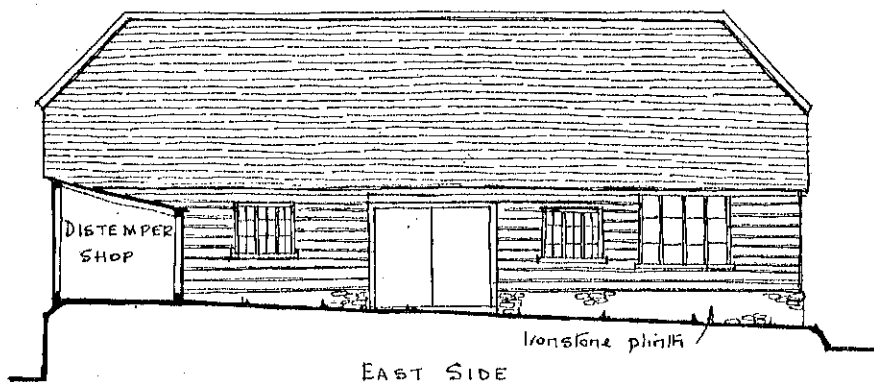


Late 19c. 8-bay barn type building, built between 1881 + 1896 of ironstone and weatherboarding, with tiled roof, used as builders' and undertakers, together with an earlier long stone, tiled and weatherboarded timber store.

Main building possibly a barn replacing an earlier one of the farmyard of Bettyng Cottage and Hunters Tloon. About 1925 William Knight joined William Browne in his builders and undertakers business which was moved from over Parfrees Garage in the street. Business closed in 1981.

Main building has ironstone plinth with brick quoins and capping, tarred weatherboarding over, built above, behind retaining wall to Church Lane. Gabled roof with ridge tiles to hips. Floor clunch. Roof timbers large, stamped DN (Duke of Northumberland), clasped purlins, tie beams, collars, inclined struts, metal tie rods. Large doors to E. had removable oak sill to allow carts in. N. end partitioned off with boarded ceiling + suspended timber floor. Office had pigeon holes for nails, screws etc. Paint was hand ground and mixed in paint shop. Paint store for paint and pitch for coffins. Distemper mixed by hand in distemper shop stored in bins.

Timber shed had brick wall inside ironstone wall, clunch floor, roof with clasped purlins, collars, ties, struts. N. wall had 3 unglazed openings, + 2 bays with corrugated iron.



Lean-to for handcart and ladders.